

DP-303k FLANGED BALL VALVE LINED FEP, PFA

acc. to PN-EN, DN15÷DN80 with full bore, DN100 with reduced bore

DIAMETER RANGE

from DN15 to DN100

CHARACTERISTIC

Ball valves type DP-303k are cut-off dismantlable valves. In diameter range DN15÷DN80 valves have full bore and in diameter DN100 valves have reduced bore. Flanged connections are executed according to PN-EN 1092-1:2006. Ball valves are lined with FEP or PFA. Moreover, in case of increased wear and frictions, instead of PTFE it can be used ceramic ball, what automatically increases resistance of valve to wear and improves its mechanical properties. Valves can be assembled on vertical or horizontal pipelines in any position, but they should work only in completely open or completely closed position. Valves have also simple construction and can be regenerated. There is possibility of antistatic execution which protects against static charges (ANTISTATIC).

WORKING PARAMETERS

Nominal pressure:

C4-PN6, **C5**-PN10, **C1**-PN16

Temperature:

T19 - from -20°C to +150°C

T20 - from -20°C to +200°C

T21 - from -20°C to +250°C

T1 - from -30°C to +150°C

T2 - from -30°C to +200°C

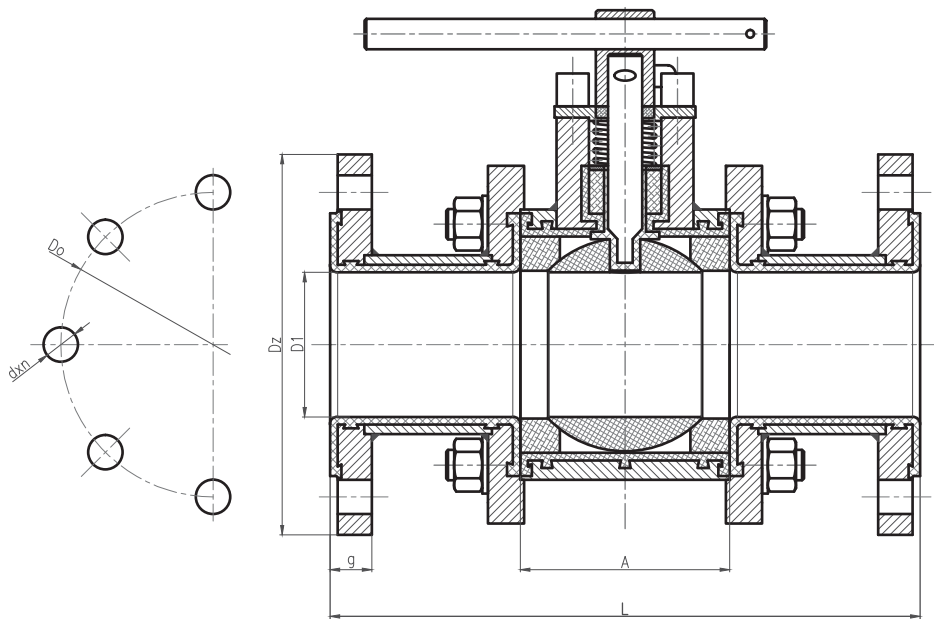
T4 - from -30°C to +250°C

PART	EXECUTION	
	FEP	PFA
	Material specification	
Lining:	FEP	PFA
Body:	1.0050	1.0050
Ball:	PTFE or ceramic	PTFE or ceramic
Stem:	1.4571	1.4571
Ball seals:	PTFE	PTFE
Stem seals:	PTFE	PTFE
Handle:	1.4571	1.4571
Anticorrosive protection:	painting coat	painting coat
Application:	<ul style="list-style-type: none"> diluted and concentrated organic and inorganic acids, alkalis and saline solution, organic solvents, halogens and ozone <p>It is not resistant in:</p> <ul style="list-style-type: none"> melt of sodium and potassium, fluohydric acid (35% to conc.) at 100°C, formic acid (10% to conc.) at 150°C, acetic acid (10% to conc.) at 150°C 	<ul style="list-style-type: none"> diluted and concentrated organic and inorganic acids, alkalis and saline solution, organic solvents, halogens and ozone

Ball valve can be provided with following additional equipment:

- pneumatic or electric drive (possible Ex execution)
- worm gear
- limit signal indicator (possible Ex execution)
- column
- possibility of sealing or padlocking

DP-303k



DN	15	20	25	32	40	50	65	80	100
L	130	150	160	180	200	230	290	310	350
A	38	46	52	65	67	78	90	110	130
D1	13	18	24	32	38	48	62	76	96
Weight (kg)	2,0	3,0	4,0	6,0	8,4	11,2	11,5	20,5	29,0
Flanges according to PN EN 1092-1:2006, PN 6									
Do	55	65	75	90	100	110	130	150	170
dxn	11x4	11x4	11x4	14x4	14x4	14x4	14x4	18x4	18x4
Flanges according to PN EN 1092-1:2006, PN 10									
Do	65	75	85	100	110	125	145	160	180
dxn	14x4	14x4	14x4	18x4	18x4	18x4	18x4	18x8	18x8
Flanges according to PN EN 1092-1:2006, PN 16									
Do	65	75	85	100	110	125	145	160	180
dxn	14x4	14x4	14x4	18x4	18x4	18x4	18x4	18x8	18x8

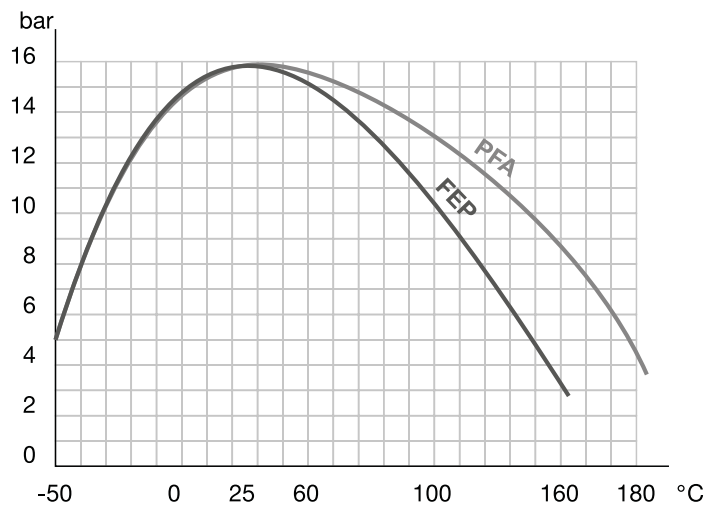


Diagram of temperature and pressure relation

DP-304kC FLANGED BALL VALVE LINED FEP, PFA

acc. to ANSI, ASME, 1/2"÷3" with full bore, NPS 4" with reduced bore

DIAMETER RANGE

od NPS 1/2" do NPS 4"

CHARACTERISTIC

Ball valves type DP-303kC are cut-off dismantlable valves. In diameter range NPS 1/2"÷3" valves have full bore and in diameter NPS 4" valves have reduced bore. Flanged connections are executed according to ANSI B 16.5 class 150 and building length of valve according to ANSI B 16.10. Ball valves are lined with FEP or PFA. Moreover, in case of increased wear and frictions, instead of PTFE it can be used ceramic ball, what automatically increases resistance of valve to wear and improves its mechanical properties. Valves can be assembled on vertical or horizontal pipelines in any position, but they should work only in completely open or completely closed position. Valves have also simple construction and can be regenerated. There is possibility of antistatic execution which protects against static charges (ANTISTATIC).

WORKING PARAMETERS

Nominal pressure:

CL150 - class 150NPS

Temperature:

T19 - from -20°C to +150°C

T20 - from -20°C to +200°C

T21 - from -20°C to +250°C

T1 - from -30°C to +150°C

T2 - from -30°C to +200°C

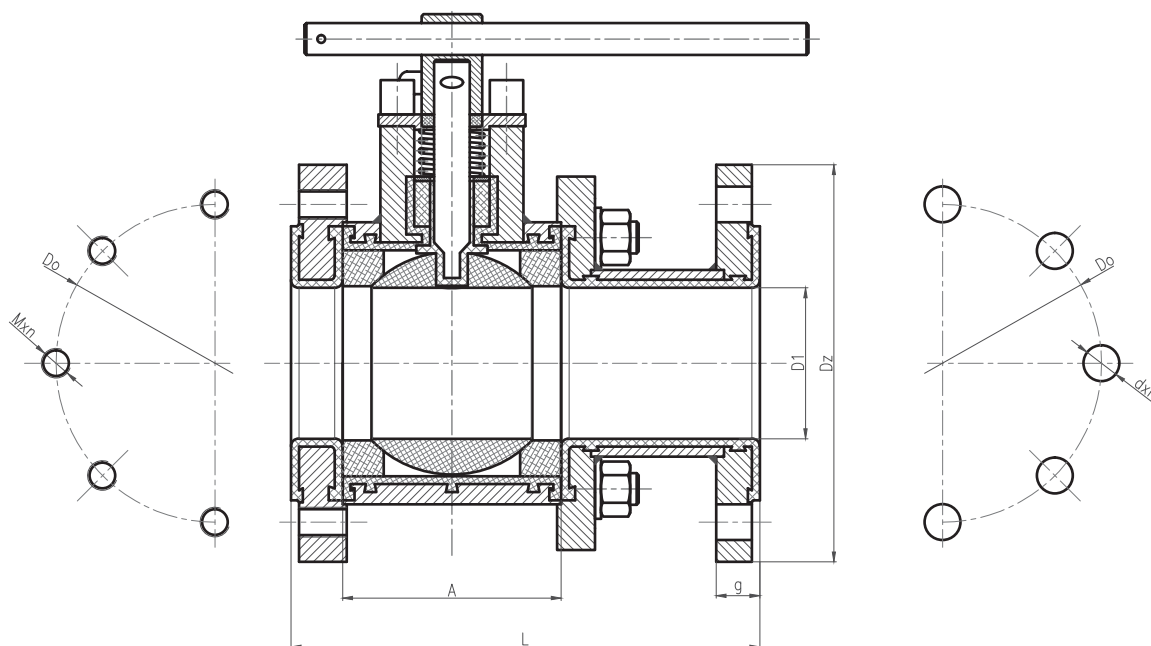
T4 - from -30°C to +250°C

PART	EXECUTION	
	FEP	PFA
	Material specification	
Lining:	FEP	PFA
Body:	1.0037	1.0037
Ball:	PTFE or ceramic	PTFE or ceramic
Stem:	1.4571	1.4571
Ball seals:	PTFE	PTFE
Stem seals:	PTFE	PTFE
Handle:	1.4571	1.4571
Anticorrosive protection:	painting coat	painting coat
Application:	<ul style="list-style-type: none"> diluted and concentrated organic and inorganic acids, alkalis and saline solution, organic solvents, halogens and ozone <p>It is not resistant in:</p> <ul style="list-style-type: none"> melt of sodium and potassium, fluohydric acid (35% to conc.) at 100°C, formic acid (10% to conc.) at 150°C, acetic acid (10% to conc.) at 150°C 	<ul style="list-style-type: none"> diluted and concentrated organic and inorganic acids, alkalis and saline solution, organic solvents, halogens and ozone

Ball valve can be provided with following additional equipment:

- pneumatic or electric drive (possible Ex execution)
- worm gear
- limit signal indicator (possible Ex execution)
- column
- possibility of sealing or padlocking

DP-304kC



L - Building length according to ANSI B 16.10

NPS	1/2"	3/4"	1"	1 1/4"	1 1/2"	2"	2 1/2"	3"	4"
L	108	117	127	140	165	178	190	203	229
Dz	89	98	108	117	127	152	178	190	229
A	38	46	52	65	67	78	90	110	130
g	13	18	24	32	38	48	62	76	96
Do	60,3	69,8	79,4	88,9	98,4	120,6	139,7	152,4	190,5
dxn	4x16	4x16	4x16	4x16	4x16	4x19	4x19	8x19	8x19
weight (kg)	1,9	2,9	4,0	6,0	8,4	11,2	15,0	20,5	29,0

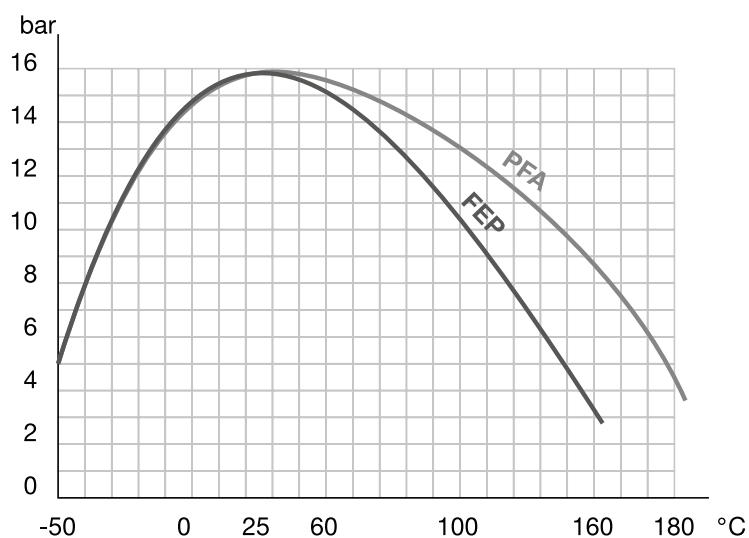


Diagram of temperature and pressure relation