

09

STRIKING TOOLS

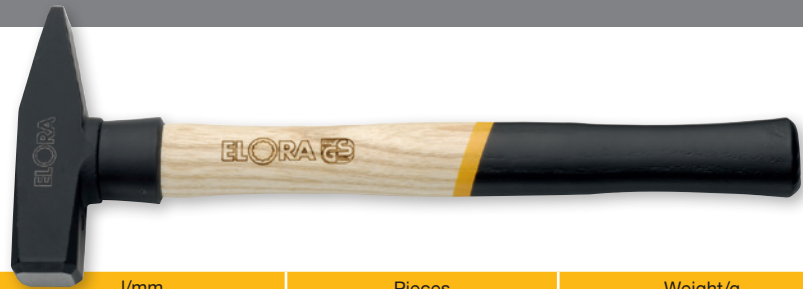


HAMMERS AND CLUB HAMMERS	Page 360
SOFT FACED HAMMERS	Page 364
HAND STRIKING TOOLS	Page 369
DRIFT, CENTER, PIN PUNCHES	Page 372
BENDING BARS, NAIL LIFTERS AND WRECKING BARS	Page 379
BENCH VICES AND ACCESORIES	Page 383

1665-...

ENGINEER'S HAMMER, GERMAN PATTERN

- drop forged hammer head with safety collar
- inductive hardened and coated
- face and peen polished
- ash handle with shaft protection bush made of nylon
- mechanically fixed with a steel ring wedge and epoxide resin
- ELORA-high grade tool steel C45 / 1.0503
- hammer head according to DIN 1041, handle according to DIN 5111



Code	Number	g	l/mm	Pieces	Weight/g
1665001007000	1665-100	100	260	2	145
1665002007000	1665-200	200	275	2	250
1665003007000	1665-300	300	300	2	370
1665004007000	1665-400	400	310	2	460
1665005007000	1665-500	500	320	2	590
1665006007000	1665-600	600	325	2	730
1665008007000	1665-800	800	350	2	910
1665010007000	1665-1000	1000	355	2	1170
1665015007000	1665-1500	1500	380	2	1700
1665020007000	1665-2000	2000	400	2	2285

1665ST-...

HANDLE FOR ENGINEER'S HAMMER

- for ELORA-No. 1665-..., German pattern
- ash handle according to DIN 5111

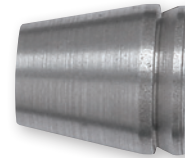


Code	Number	g	l/mm	Pieces	Weight/g
1665001008000	1665ST-100	100	250	6	50
1665002008000	1665ST-200	200	275	6	57
1665003008000	1665ST-300	300	300	6	71
1665004008000	1665ST-400	400	310	6	100
1665005008000	1665ST-500	500	320	6	105
1665006008000	1665ST-600	600	325	6	127
1665008008000	1665ST-800	800	350	2	149
1665010008000	1665ST-1000	1000	355	2	157
1665015008000	1665ST-1500	1500	380	2	185
1665020008000	1665ST-2000	2000	400	2	285

1665KL-...

WEDGE FOR ENGINEER'S HAMMER

- for ELORA-No. 1665-..., German pattern



Code	Number	g	Ø	Pieces	Weight/g
1665401000000	1665KL-100	100	7	6	1
1665402000000	1665KL-200	200	8	6	2
1665403000000	1665KL-300	300	9	6	2
1665404000000	1665KL-400	400	10	6	3
1665405000000	1665KL-500	500	12	6	4
1665406000000	1665KL-600	600	13	6	6
1665408000000	1665KL-800	800	14	6	7
1665410000000	1665KL-1000	1000	15	6	8
1665415000000	1665KL-1500	1500	15	6	8
1665420000000	1665KL-2000	2000	16	6	11

1665-K...

ENGINEER'S HAMMER, GERMAN PATTERN

- vibration-free
- drop forged hammer head with safety collar
- inductive hardened and coated
- face and peen polished
- 3 component high security handle with nonslip rubber grip and a core made of aluminium alloy
- shaft protection bush made of nylon
- mechanically fixed with a steel ring wedge and epoxide resin
- ELORA-high grade tool steel C45 / 1.0503
- hammer head according to DIN 1041



Code	Number	g	l/mm	Pieces	Weight/g
1665003007700	1665-K300	300 g	304	2	467
1665005007700	1665-K500	500 g	325	2	751
1665010007700	1665-K1000	1000 g	363	2	1372

You will find the matching OMS-12 module on page no. 53



You will find the matching OMS-8 module on page no. 54



1670-...

ENGINEER'S HAMMER, ENGLISH PATTERN

- drop forged hammer head
- inductive hardened and coated
- face and peen polished
- ash handle
- mechanically fixed with a ring steel wedge and epoxide resin
- ELORA-high grade tool steel C45 / 1.0503



Code	Number	lb.	l/mm	Pieces	Weight/g
1670100237000	1670-1/2	1/2	295	2	310
1670100287000	1670-3/4	3/4	315	2	465
1670100347000	1670-1	1	335	2	555
1670100387000	1670-1.1/2	1.1/2	365	2	825
1670100497000	1670-2	2	375	2	1025

1670ST-...

HANDLE FOR ENGINEER'S HAMMER

- for ELORA-No. 1670-..., English pattern
- ash handle according to DIN 5111

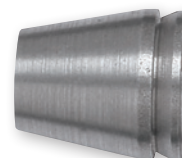


Code	Number	lb.	l/mm	Pieces	Weight/g
1670100238000	1670ST-1/2	1/2	295	6	81
1670100288000	1670ST-3/4	3/4	315	6	98
1670100348000	1670ST-1	1	335	6	105
1670100388000	1670ST-1.1/2	1.1/2	365	2	132
1670100498000	1670ST-2	2	375	2	150

1670KL-...

WEDGE FOR ENGINEER'S HAMMER

- for ELORA-No. 1670-..., English pattern



Code	Number	lb.	Ø	Pieces	Weight/g
1670400230000	1670KL-1/2	1/2	8	6	2
1670400280000	1670KL-3/4	3/4	10	6	3
1670400340000	1670KL-1	1	12	6	6
1670400380000	1670KL-1.1/2	1.1/2	13	6	7
1670400490000	1670KL-2	2	15	6	8

1672-...

CLUB HAMMER, GERMAN PATTERN

- drop forged hammer head with safety collar
- inductive hardened and coated
- faces polished
- ash handle with shaft protection bush made of nylon
- mechanically fixed with a steel ring wedge and epoxide resin
- ELORA-high grade tool steel C45 / 1.0503
- hammer head according to DIN 6475, handle according to DIN 5135



Code	Number	g	l/mm Ø	Pieces	Weight/g
1672010007000	1672-1000	1000 g	260	2	1180
1672012507000	1672-1250	1250 g	260	2	1430
1672015007000	1672-1500	1500 g	280	2	1690
1672020007000	1672-2000	2000 g	300	2	2200

1672ST-...

HANDLE FOR CLUB HAMMER

- for ELORA-No. 1672-..., German pattern
- ash handle according to DIN 5135

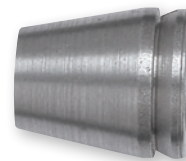


Code	Number	g	l/mm	Pieces	Weight/g
1672401008000	1672ST-1000	1000	260	6	82
1672412508000	1672ST-1250	1250	260	6	86
1672415008000	1672ST-1500	1500	280	6	115
1672402008000	1672ST-2000	2000	300	6	134

1672KL-...

WEDGE FOR CLUB HAMMER

- for ELORA-No. 1672-..., German pattern



Code	Number	g	Ø	Pieces	Weight/g
1672410000000	1672KL-1000	1000	14	6	7
1672412500000	1672KL-1250	1250	15	6	8
1672415000000	1672KL-1500	1500	15	6	8
1672420000000	1672KL-2000	2000	16	6	11

1672-K...

CLUB HAMMER, GERMAN PATTERN

- vibration-free
- drop forged hammer head with safety collar
- inductive hardened and coated
- faces polished
- 3 component high safety handle with nonslip rubber grip and a core made of aluminium alloy
- shaft protection bush made of nylon
- mechanically fixed with a steel ring wedge and epoxide resin
- ELORA-high grade tool steel C45 / 1.0503
- hammer head according to DIN 6475



Code	Number	g	l/mm	Pieces	Weight/g
1672008007700	1672-K800	800	260	2	1031
1672010007700	1672-K1000	1000	260	2	1215
1672012507700	1672-K1250	1250	260	2	1416
1672015007700	1672-K1500	1500	282	2	1816

1673-...

SLEDGE HAMMER, GERMAN PATTERN

- forged hammer head
- inductive hardened and coated
- face and peen polished
- ash handle
- mechanically fixed with a steel ring wedge
- ELORA-high grade tool steel C45 / 1.0503
- hammer head according to DIN 1042, handle according to DIN 5112



Code	Number	g	l/mm	Pieces	Weight/g
1673030007000	1673-3000	3000	900	1	3700
1673040007000	1673-4000	4000	900	1	4600
1673050007000	1673-5000	5000	900	1	5600
1673060007000	1673-6000	6000	900	1	6500
1673080007000	1673-8000	8000	900	1	8500
1673100007000	1673-10000	10000	900	1	10500

1673ST-... HANDLE FOR SLEDGE HAMMER

- ▶ for ELORA-No. 1673-..., German pattern
- ▶ ash handle according to DIN 5112



Code	Number	g	l/mm	Pieces	Weight/g
1673430008000	1673ST-3000	3000	900	2	620
1673440008000	1673ST-4000	4000	900	2	625
1673450008000	1673ST-5000	5000	900	2	670
1673460008000	1673ST-6000	6000	900	2	700
1673480008000	1673ST-8000	8000	900	2	800
1673410008001	1673ST-10000	10000	900	2	800

1673KL-... WEDGE FOR SLEDGE HAMMER


- ▶ for ELORA-No. 1673-..., German pattern



Code	Number	g	Ø	Pieces	Weight/g
1673430008010	1673KL-3000	3000	20	6	24
1673440008010	1673KL-4000	4000	20	6	24
1673450008010	1673KL-5000	5000	20	6	24
1673460008010	1673KL-6000	6000	20	6	24
1673480008010	1673KL-8000	8000	20	6	24
1673410008011	1673KL-10000	10000	20	6	24

1678 CARPENTER'S HAMMER


- ▶ drop forged hammer head
- ▶ black, nonslip plastic handle
- ▶ head coated and mechanically fixed
- ▶ steel tube handle
- ▶ head made from high grade tool steel C45 / 1.0503



Code	Number	l/mm	Pieces	Weight/g
1678000000000	1678	320	2	600

1680-330 CLAW HAMMER

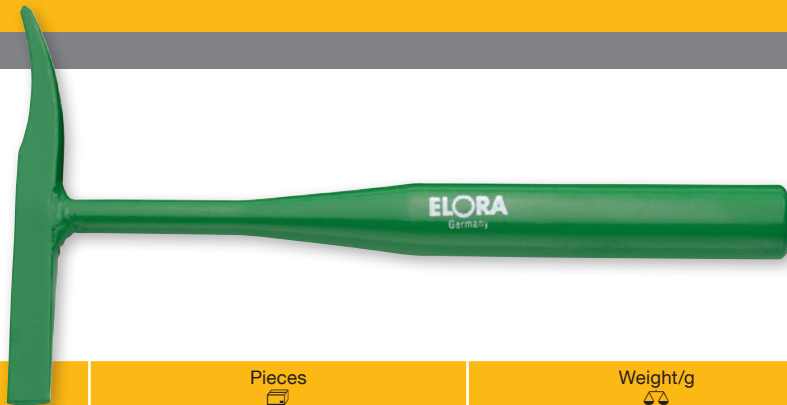
- ▶ drop forged hammer head
- ▶ black, nonslip plastic handle
- ▶ coated head, face and claw polished
- ▶ steel tube handle
- ▶ head made of high grade tool steel C45 / 1.0503



Code	Number	Face Ø mm	l/mm	Pieces	Weight/g
1680000000000	1680-330	28	330	2	765

331 WELDER'S CHIPPING HAMMER

- ▶ with steel tube handle
- ▶ coated



Code	Number	l/mm	Pieces	Weight/g
0331000005100	331	290	1	400

1620-...
RUBBER MALLET

- with 2 flat faces and ash handle
- according to DIN 5128-90, 90 Shore A
- spare heads on request

Code	Number	Head Ø mm	Head-Length mm	l/mm	Pieces	Weight/g
1620000557000	1620-55	55	90	320	2	350
1620000657000	1620-65	65	115	340	2	520
1620000757000	1620-75	75	130	380	2	750
1620000907000	1620-90	90	140	380	2	1130

1660-...
SOFT FACED HAMMER

- face holder made of cast zinc
- exchangeable faces made of impact resistant Cellulose-Acetate
- ash handle
- DIN 53505, 65 Shore D

Code	Number	Head Ø mm	l/mm	Pieces	Weight/g
1660000220000	1660-22	22	250	2	145
1660000270000	1660-27	27	265	2	230
1660000320000	1660-32	32	280	2	310
1660000350000	1660-35	35	290	2	405
1660000400000	1660-40	40	320	2	570
1660000500000	1660-50	50	340	2	845
1660000600000	1660-60	60	340	2	1345

1660E-...
SPARE PLASTIC FACE

- for ELORA-No. 1660-...
- made of impact resistant Cellulose-Acetate

Code	Number	Head Ø mm	Pieces	Weight/g
1660010220000	1660E- 22	22	6	6
1660010270000	1660E- 27	27	6	14
1660010320000	1660E- 32	32	6	22
1660010350000	1660E- 35	35	6	28
1660010400000	1660E- 40	40	6	35
1660010500000	1660E- 50	50	6	68
1660010600000	1660E- 60	60	6	106

1660KL-...
WEDGE FOR SOFT FACED HAMMER

- for ELORA-No. 1660-...

Code	Number	g	Ø	Pieces	Weight/g
1660410220000	1660KL-22	22	8	6	2
1660410270000	1660KL-27	27	10	6	3
1660410320000	1660KL-32	32	10	6	3
1660410350000	1660KL-35	35	10	6	5
1660410400000	1660KL-40	40	12	6	5
1660410500000	1660KL-50	50	13	6	6
1660410600000	1660KL-60	60	13	6	6

1660ST-...
HANDLE FOR SOFT FACED HAMMER

- for ELORA-No. 1660-1661-...
- ash wood

Code	Number	Ø	l/mm	Pieces	Weight/g	Code	Number	Ø	l/mm	Pieces	Weight/g
1660400228000	1660ST-22	22	250	6	44	1660400408000	1660ST-40	40	320	6	82
1660400278000	1660ST-27	27	265	6	51	1660400508000	1660ST-50	50	340	6	90
1660400328000	1660ST-32	32	280	6	55	1660400608000	1660ST-60	60	340	6	100
1660400358000	1660ST-35	35	290	6	58						

1661-...

PLASTIC HAMMER

- face holder made of cast zinc
- exchangeable faces made of impact resistant Desmopan
- ash handle
- DIN 53505, 55 Shore D



Code	Number	Head Ø mm	l/mm	Pieces	Weight/g
1661000220000	1661-22	22	250	2	142
1661000320000	1661-32	32	280	2	330
1661000400000	1661-40	40	320	2	535
1661000500000	1661-50	50	335	2	855

1661E-...

SPARE PLASTIC FACE

- for ELORA-No. 1661-...
- wear- and break-resistant material Desmopan



Code	Number	Head Ø mm	Pieces	Weight/g
1661010220000	1661E- 22	22	6	14
1661010320000	1661E- 32	32	6	42
1661010400000	1661E- 40	40	6	74
1661010500000	1661E- 50	50	6	130

1690E-...

SPARE NYLON FACE

- for ELORA-No. 1690-...
- wear- and break-resistant material Nylon



Code	Number	Head Ø mm	Pieces	Weight/g
1690010206000	1690E- 20	20	6	6
1690010256000	1690E- 25	25	6	10
1690010306000	1690E- 30	30	6	18
1690010356000	1690E- 35	35	6	24
1690010406000	1690E- 40	40	6	32
1690010456000	1690E- 45	45	6	40
1690010506000	1690E- 50	50	2	55
1690010606000	1690E- 60	60	2	95
1690010706000	1690E- 70	70	2	130
1690010806000	1690E- 80	80	2	200

1690-...

DEAD-BLOW NYLON SOFT FACED HAMMER

- specially appropriated for targeted strikes (automobile industries, moulds and tool making)
- for non-rebounding strikes without losing power of impact and material gently work
- strong steel center section with holding pins for the spare nylon faces
- mass of steel shot in the hammer head exactly fine-tuned (mass inertia principle)
- nylon striking faces, exchangeable
- hickory handle
- DIN 53505, 73 Shore D



Code	Number	Head Ø mm	l/mm	Pieces	Weight/g	Code	Number	Head Ø mm	l/mm	Pieces	Weight/g
1690000206000	1690-20	20	305	2	230	1690000456000	1690-45	45	365	2	850
1690000256000	1690-25	25	305	2	310	1690000506000	1690-50	50	360	1	1030
1690000306000	1690-30	30	330	2	430	1690000606000	1690-60	60	360	1	1750
1690000356000	1690-35	35	330	2	550	1690000706000	1690-70	70	380	1	2290
1690000406000	1690-40	40	350	2	720	1690000806000	1690-80	80	380	1	3200

1600-...

HAMMER HOLDER

- 1600-1H and 1600-2H:
for presentation of hammers on perforated board
- 1600-3H:
for presentation of club hammers on perforated board



Code	Number	l/mm ┌──┐	Pieces ☞	Weight/g ⚖
160000017000	1600-1H	200	1	290
160000027000	1600-2H	300	1	365
160000037000	1600-3H	200	1	445

1685-...

SIMPLEX-SOFT FACED HAMMER

- for use with striking faces ELORA-No. 1687E
- striking faces are not included
and have to be ordered separately
- basic unit made of malleable cast iron
with strong groove profile
- handle made of hard wood



Code	Number	For faces Ø mm	l/mm ┌──┐	Pieces ☞	Weight/g ⚖
1685000306000	1685-30	30	300	2	380
1685000406000	1685-40	40	330	2	720
1685000506000	1685-50	50	370	2	890
1685000606000	1685-60	60	405	1	1150
1685000806000	1685-80	80	495	1	2210

1686-...

SIMPLEX-SOFT FACED HAMMER

- for use with striking faces ELORA-Nr. 1687E-...
- do not use with soft-metal faces
ELORA-No. 1687E-WM...
- striking faces are not included
and have to be ordered separately
- basic unit made of malleable cast iron
with strong groove profile
- handle made of hard wood



Code	Number	For faces Ø mm	l/mm ┌──┐	Pieces ☞	Weight/g ⚖
1686000306000	1686-30	30	300	2	205
1686000406000	1686-40	40	350	2	375
1686000506000	1686-50	50	370	2	450
1686000606000	1686-60	60	405	1	555

1687E-...

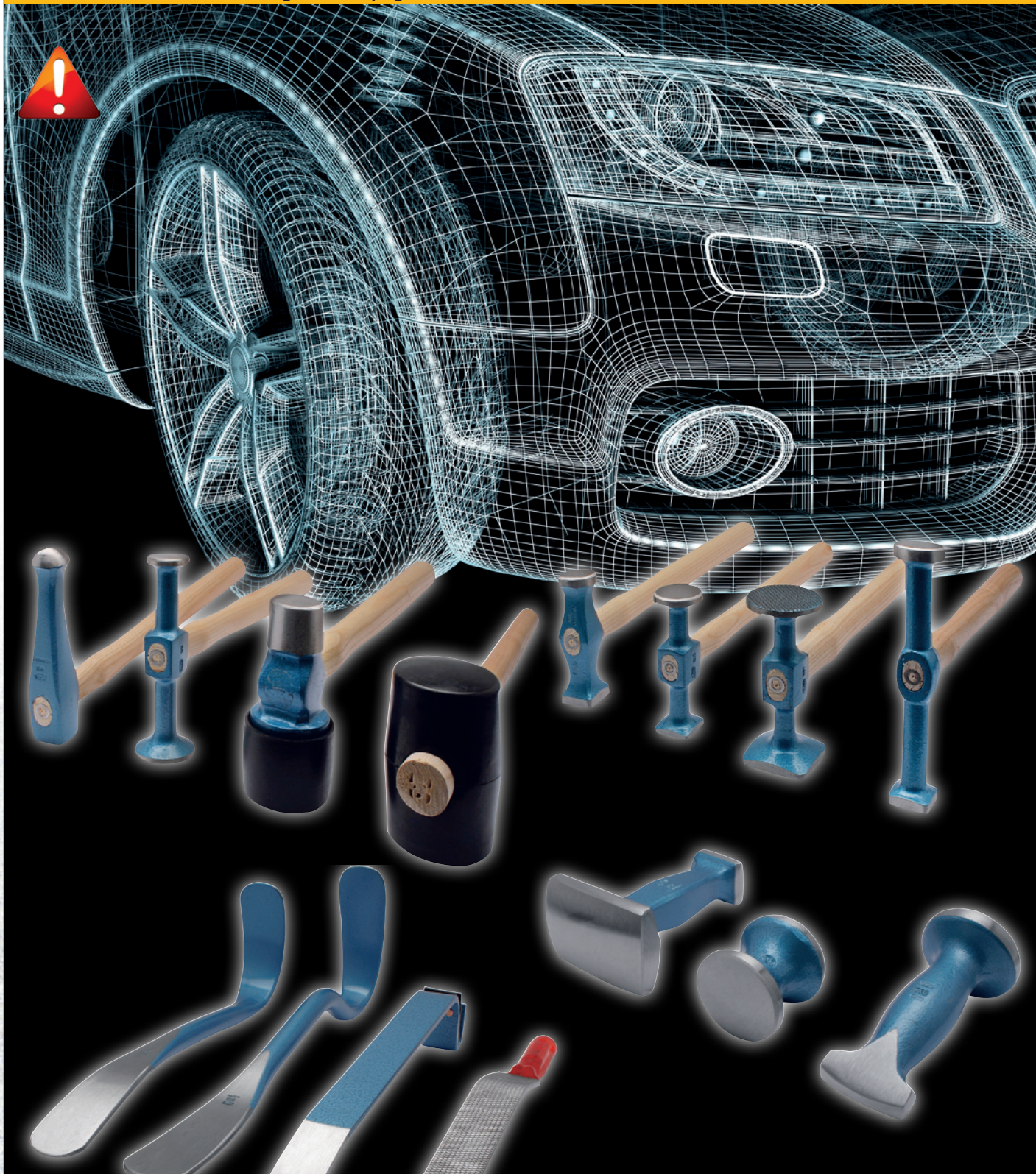
STRIKING FACES FOR "SIMPLEX" SOFT FACED HAMMER

- for use with Simplex-Soft Faced Hammer ELORA-No. 1685 and 1686
- resistant to color abrasion
- soft-metal faces ELORA-No. 1687E-WM ...
not to be used with ELORA-No. 1686
- TPS: blue, Thermoplastic-Elastomer, for delicate work pieces, alloy construction, window construction, building industry, carpenter's workshop, installation work
- GU: black, rubber composite, for robust work, i.e. plaster crafts...
- SK: white, super plastic, very tough, unbreakable, acid and base resistant, RCH 100 nature, all-purpose use, for metal industry (edge hits), plaster works, automobile sector, car body construction
- TPM: grey, Thermoplastic-Elastomer, all-purpose use, for tilling, dry construction, metal sheet processing
- KU: red, Cellulose-Acetate, high operational demand, building industry, automobile sector, car body construction, staging, ...
- NY: white, Polyamide 6 (Nylon), very high operational demand, for metal-working industry, (powerful targeted strikes), heavy- and building industry, staging, moulds construction, mounting of sharp-edged tools, repair work on agricultural machinery, ...
- WM: silver, soft metal, Al-Cu alloy, heat resistant, for tool construction, heavy- and building industry, moulds construction, foundry, straightening work



Code	Number	Striking Type	Head Ø mm	Pieces	Weight/g
1687010306000	1687E-TPS 30	soft, 65 Shore A	30	6	24
1687010406000	1687E-TPS 40	soft, 65 Shore A	40	6	51
1687010506000	1687E-TPS 50	soft, 65 Shore A	50	2	97
1687010606000	1687E-TPS 60	soft, 65 Shore A	60	1	150
1687003306000	1687E-GU 30	medium, 95 Shore A	30	6	34
1687003406000	1687E-GU 40	medium, 95 Shore A	40	6	78
1687003506000	1687E-GU 50	medium, 95 Shore A	50	2	130
1687003606000	1687E-GU 60	medium, 95 Shore A	60	1	250
1687003806000	1687E-GU 80	medium, 95 Shore A	80	1	505
1687004306000	1687E-SK 30	medium, 95 Shore A	30	6	22
1687004406000	1687E-SK 40	medium, 65 Shore D	40	6	52
1687004506000	1687E-SK 50	medium, 65 Shore D	50	2	98
1687004606000	1687E-SK 60	medium, 65 Shore D	60	1	160
1687004806000	1687E-SK 80	medium, 65 Shore D	80	1	325
1687011306000	1687E-TPM 30	medium, 90 Shore D	30	6	24
1687011406000	1687E-TPM 40	medium, 90 Shore D	40	6	51
1687011506000	1687E-TPM 50	medium, 90 Shore D	50	2	97
1687011606000	1687E-TPM 60	medium, 90 Shore D	60	1	140
1687006306000	1687E-KU 30	hard, 70 Shore D	30	6	26
1687006406000	1687E-KU 40	hard, 70 Shore D	40	6	58
1687006506000	1687E-KU 50	hard, 70 Shore D	50	2	116
1687006606000	1687E-KU 60	hard, 70 Shore D	60	1	180
1687008306000	1687E-NY 30	hard, 73 Shore D	30	6	28
1687008406000	1687E-NY 40	hard, 73 Shore D	40	6	64
1687008506000	1687E-NY 50	hard, 73 Shore D	50	2	120
1687008606000	1687E-NY 60	hard, 73 Shore D	60	1	200
1687008806000	1687E-NY 80	hard, 73 Shore D	80	1	405
1687009306000	1687E-WM 30	hard, Al-Cu alloy	30	6	50
1687009406000	1687E-WM 40	hard, Al-Cu alloy	40	6	122
1687009506000	1687E-WM 50	hard, Al-Cu alloy	50	2	250
1687009606000	1687E-WM 60	hard, Al-Cu alloy	60	1	405
1687009806000	1687E-WM 80	hard, Al-Cu alloy	80	1	805

You will find automotive striking tools on page no. 441-447



09

260-...

FLAT CHISEL, FLAT OVAL

- for metal work
- completely hardened and tempered
- striking head inductive tempered
- working edge sharpened and oiled
- shaft black coated
- ELORA-Chrome-Vanadium 59CrV4 / 1.2242
- according to DIN 6453



Code	Number	l/mm ┌──┐	Width of Edge mm	Profile mm	Pieces ☞	Weight/g ⚖
0260001006000	260-100	100	15	14 x 9	5	78
0260001256000	260-125	125	15	14 x 9	5	140
0260001506000	260-150	150	18	17 x 11	5	180
0260001756000	260-175	175	21	20 x 12	5	280
0260002006000	260-200	200	24	23 x 13	5	405
0260002506000	260-250	250	25	23 x 13	5	505
0260003006000	260-300	300	26	23 x 13	5	605
0260004006000	260-400	400	32	26 x 13	5	910

261-...

CAPE CHISEL, FLAT OVAL

- for metal work
- completely hardened and tempered
- striking head inductive tempered
- working edge sharpened and oiled
- shaft black coated
- ELORA-Chrome-Vanadium 59CrV4 / 1.2242
- according to DIN 6453



Code	Number	l/mm ┌──┐	Width of Edge mm	Profile mm	Pieces ☞	Weight/g ⚖
0261001506000	261-150	150	6	17 x 11	5	215
0261001756000	261-175	175	7	17 x 11	5	250
0261002006000	261-200	200	8	20 x 12	5	380
0261002506000	261-250	250	9	23 x 13	5	530

262-...

FLAT CHISEL, OCTAGONAL

- for metal work
- completely hardened and tempered
- striking head inductive tempered
- working edge sharpened and oiled
- shaft black coated
- ELORA-Chrome-Vanadium 59CrV4 / 1.2242



Code	Number	l/mm ┌──┐	Width of Edge mm	Profile mm	Pieces ☞	Weight/g ⚖
0262001006000	262-100	100	10	8	5	56
0262001256000	262-125	125	12	10	5	68
0262001506000	262-150	150	16	12	5	118
0262001756000	262-175	175	20	14	5	210
0262002006000	262-200	200	22	16	5	310
0262002506000	262-250	250	26	18	5	490
0262003006000	262-300	300	26	18	5	595

263-...

CROSS-CUT CHISEL, OCTAGONAL

- for metal work
- completely hardened and tempered
- striking head inductive tempered
- working edge sharpened and oiled
- shaft black coated
- ELORA-Chrome-Vanadium 59CrV4 / 1.2242



Code	Number	l/mm ┌──┐	Width of Edge mm	Profile mm	Pieces ☞	Weight/g ⚖
0263001256000	263-125	125	5	8	5	62
0263001506000	263-150	150	6	12	5	108
0263001756000	263-175	175	8	14	5	180
0263002006000	263-200	200	9	16	5	310
0263002506000	263-250	250	10	18	5	445

362-...

BRICKLAYER'S CHISEL, FLAT OVAL

- for stone work
- completely hardened and tempered
- striking head inductive tempered
- working edge sharpened and oiled
- shaft black coated
- ELORA-Chrome-Vanadium 59CrV4 / 1.2242
- according to DIN 7254 Form A



Code	Number	l/mm ┌──┐	Width of Edge mm	Profile mm	Pieces ☞	Weight/g ⚖
0362002006000	362-200	200	26	20 x 12	5	300
0362002506000	362-250	250	26	20 x 12	5	410
0362003006000	362-300	300	29	23 x 13	5	610
0362003506000	362-350	350	29	23 x 13	5	690
0362004006000	362-400	400	29	23 x 13	5	820

364-...

POINT CHISEL, OCTAGONAL

- for stone work
- completely hardened and tempered
- striking head inductive tempered
- working edge sharpened and oiled
- shaft black coated
- ELORA-Chrome-Vanadium 59CrV4 / 1.2242
- according to DIN 7256



Code	Number	l/mm ┌──┐	Width of Edge mm	Profile mm	Pieces ☞	Weight/g ⚖
0364002506000	364-250	250	5	16	5	350
0364003006000	364-300	300	5	18	5	545
0364003506000	364-350	350	5	18	5	670
0364004006000	364-400	400	5	20	5	950

365-...

ELECTRICIAN'S CHISEL, OCTAGONAL

- for stone work
- completely hardened and tempered
- striking head inductive tempered
- working edge sharpened and oiled
- shaft black coated
- ELORA-Chrome-Vanadium 59CrV4 / 1.2242



Code	Number	l/mm ┌──┐	Width of Edge mm	Profile mm	Pieces ☞	Weight/g ⚖
0365020086010	365-200x8x10	200	10	8 x 8	5	115
0365025086010	365-250x8x10	250	10	8 x 8	5	135
0365030106012	365-300x10x12	300	12	10 x 10	5	310

283HS

HAND GUARD

- hand protection against impacts
- no rolling away due to octagonal shape
- suitable for all ELORA chisels, except ELORA-No. 361
- flat oval 20 x 12, 23 x 13, 26 x 13 mm
- octagonal 16, 18, 20 mm
- made of impact resistant special rubber



Code	Number	l/mm	Pieces	Weight/g
0283000000000	283HS	130	6	125

361

SLIT OR CAR BODY CHISEL, EXTRA FLAT

- for car body work
- completely hardened and tempered
- striking head inductive tempered
- working edge sharpened and oiled
- shaft black coated
- ELORA-Chrome-Vanadium 59CrV4 / 1.2242



Code	Number	l/mm	Width of Edge mm	Profile mm	Pieces	Weight/g
0361000000000	361	240	26	26 x 7	5	280

361HS

HAND GUARD FOR SLIT OR CAR BODY CHISEL

- hand protection against impacts
- no rolling away due to octagonal shape
- only for ELORA-No. 361
- made of impact resistant special rubber



Code	Number	l/mm	Stück	Gewicht/g
0361000007000	361HS	130	6	94

260-S5

CHISEL SET

- 5 pcs.
- in black plastic rolling pouch
- completely hardened and tempered
- striking heads inductive tempered
- working edges ground and oiled
- shafts black lacquered
- ELORA-Chrome-Vanadium 59CrV / 1.2242
- according to DIN 6453



Code	Number	Contents	Pieces	Weight/g
0260500056000	260-S5	1 piece each: 260-125 Flat Chisel, flat oval 260-150 Flat Chisel, flat oval 260-175 Flat Chisel, flat oval 260-200 Flat Chisel, flat oval 260-250 Flat Chisel, flat oval	1	1610

265-...

CENTRE PUNCH

- completely hardened and tempered
- striking head inductive tempered
- working edge sharpened and oiled
- shaft black coated
- ELORA-Chrome-Molybdenum-Vanadium 45CrMoV7 / 1.2328
- according to DIN 7250



Code	Number	l/mm	d Ø mm	s Ø mm	Pieces	Weight/g
0265001006000	265-10	120	4	10	10	65
0265001206000	265-12	120	5	12	10	90
0265001216000	265-12L	150	5	12	10	120

230

AUTOMATIC PUNCH

- automatic impact execution due to spring mechanism (one hand operation)
- impact can be adjusted
- with hand protection
- nickel plated



Code	Number	l/mm	Pieces	Weight/g
0230000000000	230	145	3	105

264-...

DRIFT PUNCH

- completely hardened and tempered
- striking head inductive tempered
- working edge sharpened and oiled
- shaft black coated
- ELORA-Chrome-Molybdenum-Vanadium 45CrMoV7 / 1.2328
- according to DIN 6458



Code	Number	l/mm	d Ø mm	s Ø mm	Pieces	Weight/g
0264012106020	264-120x10x2	120	2,0	10	10	58
0264012106030	264-120x10x3	120	3,0	10	10	62
0264012106040	264-120x10x4	120	4,0	10	10	64
0264012106050	264-120x10x5	120	5,0	10	10	66
0264012106060	264-120x10x6	120	6,0	10	10	66
0264012126020	264-120x12x2	120	2,0	12	10	86
0264012126030	264-120x12x3	120	3,0	12	10	88
0264012126040	264-120x12x4	120	4,0	12	10	90
0264012126050	264-120x12x5	120	5,0	12	10	94
0264012126060	264-120x12x6	120	6,0	12	10	96
0264012126070	264-120x12x7	120	7,0	12	10	96
0264012126080	264-120x12x8	120	8,0	12	10	98
0264012126100	264-120x12x10	120	10,0	12	10	104

You will find mounting drift punches on page no. 379



You will find mounting check plugs on page no. 379



271-...

PARALLEL PIN PUNCH

- completely hardened and tempered
- striking head inductive tempered
- working edge sharpened and oiled
- shaft black coated
- ELORA-Chrome-Vanadium 59CrV4 / 1.2242
- according to DIN 6450

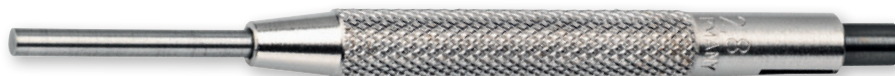


Code	Number	l/mm	l1 mm	d Ø mm	s Ø mm	Pieces	Weight/g
0271000206000	271-2	150	30	2,0	10	10	70
0271000306000	271-3	150	40	3,0	10	10	66
0271000406000	271-4	150	50	4,0	10	10	66
0271000416000	271-4L	175	80	4,0	10	10	62
0271000506000	271-5	150	50	5,0	10	10	66
0271000606000	271-6	150	50	6,0	10	10	70
0271000616000	271-6L	175	80	6,0	10	10	70
0271000706000	271-7	150	50	7,0	12	10	102
0271000806000	271-8	150	50	8,0	12	10	108
0271000906000	271-9	150	50	9,0	12	10	112
0271001006000	271-10	150	50	10,0	12	10	100

270-...

PIN PUNCH WITH GUIDE SLEEVE

- with movable guide sleeve
- ELORA-No. 270-59 with fix guide sleeve
- fine ground and polished
- shaft knurled
- driving point made of 115CrV3 / 1.2210, 55-59 HRC



Code	Number	l/mm	Pieces	Weight/g
0270000906000	270-09	80	10	15
0270001406000	270-14	85	10	21
0270001806000	270-18	88	10	25
0270002406000	270-24	92	10	30
0270002806000	270-28	96	10	30
0270003406000	270-34	96	10	35
0270003906000	270-39	100	10	40
0270005906000	270-59	100	10	45



270-S8

PIN PUNCH SET

- 8 pcs.
- in black metal box
- with movable guide sleeve
- ELORA-No. 250-59 with fix guide sleeve
- fine ground and polished
- shaft knurled
- driving point made of 115CrV3 / 1.2210, 55-59 HRC

Code	Number	Contents	Pieces	Weight/g
0270500081000	270-S8	1 pcs. each: Pin Punch with guide sleeve 270-09, 14, 18, 24, 28, 34, 39, 59	10	241

264K / 264KS

DRIFT PUNCH SET

- 6 pcs.
- ELORA-No. 264K in metal box
- ELORA-No. 264KS in plastic holder
- completely hardened and tempered
- striking heads inductive tempered
- working edge sharpened and oiled
- shaft black coated
- ELORA-Chrome-Molybdenum-Vanadium 45CrMoV7 / 1.2328
- according to DIN 6458



Code	Number	Contents	Pieces	Weight/g
0264500606000	264K	1 piece each: 264-120 x 10 x 2 mm, Drift Punch 264-120 x 10 x 3 mm, Drift Punch 264-120 x 10 x 4 mm, Drift Punch 264-120 x 10 x 5 mm, Drift Punch 264-120 x 10 x 6 mm, Drift Punch 265-120 x 10 mm, Centre Punch	1	780
0264500607000	264KS	1 piece each: 264-120 x 10 x 2 mm, Drift Punch 264-120 x 10 x 3 mm, Drift Punch 264-120 x 10 x 4 mm, Drift Punch 264-120 x 10 x 5 mm, Drift Punch 264-120 x 10 x 6 mm, Drift Punch 265-120 x 10 mm, Centre Punch	1	780

266K / 266KS / 266S

CHISEL AND PUNCH SET

- 6 pcs.
- ELORA-No. 266K in metal box
- ELORA-No. 266KS in plastic holder
- ELORA-No. 266S in wooden holder
- completely hardened and striking heads inductive tempered
- working edge sharpened and oiled
- shaft black coated



Code	Number	Contents	Pieces	Weight/g
0266500626000	266K	1 piece each: 262-125 Flat Chisel, octagonal 262-150 Flat Chisel, octagonal 263-125 Cross-Cut Chisel, octagonal 264-120 x 10 x 4 mm, Drift Punch 264-120 x 12 x 4 mm, Drift Punch 265-120 x 10 mm, Centre Punch	1	890
0266500627000	266KS	1 piece each: 262-125 Flat Chisel, octagonal 262-150 Flat Chisel, octagonal 263-125 Cross-Cut Chisel, octagonal 264-120 x 10 x 4 mm, Drift Punch 264-120 x 12 x 4 mm, Drift Punch 265-120 x 10 mm, Centre Punch	1	580
0266500606000	266S	1 piece each: 262-125 Flat Chisel, octagonal 262-150 Flat Chisel, octagonal 263-125 Cross-Cut Chisel, octagonal 264-120 x 10 x 4 mm, Drift Punch 264-120 x 12 x 4 mm, Drift Punch 265-120 x 10 mm, Centre Punch	1	650

271K / 271KS / 271S

PARALLEL PIN PUNCH SET

- 6 pcs.
- ELORA-No. 271K in metal box
- ELORA-No. 271KS in plastic holder
- ELORA-No. 271S in wooden holder
- completely inductive hardened and tempered
- striking heads inductive tempered
- working edge sharpened and oiled
- shaft black coated
- ELORA-Chrome-Vanadium 59CrV4 / 1.2242
- according to DIN 6450



Code	Number	Contents	Pieces	Weight/g
0271500616000	271K	1 piece each Parallel Pin Punch: 271-150 x 2 mm 271-150 x 3 mm 271-150 x 4 mm 271-150 x 5 mm 271-150 x 6 mm 271-150 x 8 mm	1	815
0271500617000	271KS	1 piece each Parallel Pin Punch: 271-150 x 2 mm 271-150 x 3 mm 271-150 x 4 mm 271-150 x 5 mm 271-150 x 6 mm 271-150 x 8 mm	1	540
0271500606000	271S	1 piece each Parallel Pin Punch: 271-150 x 2 mm 271-150 x 3 mm 271-150 x 4 mm 271-150 x 5 mm 271-150 x 6 mm 271-150 x 8 mm	1	580



267-H...

PLASTIC HOLDER FOR IMPACT TOOLS

- for flat oval, octagonal chisels, center punches, drift and pin punches



Code	Number	Shaft size mm	Pieces	Weight/g
0267000017000	267-1H	10, octagonal	10	12
0267000027000	267-2H	12, octagonal	10	12
0267000037000	267-3H	16, octagonal	10	12
0267000047000	267-4H	18, octagonal	10	12
0267000057000	267-5H	20, octagonal	10	12
0267000067000	267-6H	14x9, flat oval	10	12
0267000077000	267-7H	17x11, flat oval	10	12
0267000087000	267-8H	20x12, flat oval	10	12
0267000097000	267-9H	23x13, flat oval	10	12
0267000107000	267-10H	26x13, flat oval	10	12
0267000117000	267-11H	26x7, flat oval	10	12

285-...
WAD PUNCH

- for punching of carton, leather, rubber, sealing material and other soft material
- forged, cutting edge hardened and ground
- shaft red coated
- lightly conical inside for easy removal of the cuttings
- high grade steel
- according to DIN 7200, Form A



Code	Number	Ø	l/mm	Pieces	Weight/g	Code	Number	Ø	l/mm	Pieces	Weight/g
0285000026000	285-2	2	105	12	40	0285000376000	285-37	37	205	1	750
0285000036000	285-3	3	105	12	40	0285000386000	285-38	38	205	1	780
0285000046000	285-4	4	105	12	40	0285000396000	285-39	39	210	1	800
0285000056000	285-5	5	110	12	55	0285000406000	285-40	40	210	1	810
0285000066000	285-6	6	110	12	60	0285000416000	285-41	41	210	1	820
0285000076000	285-7	7	120	12	80	0285000426000	285-42	42	220	1	980
0285000086000	285-8	8	120	12	85	0285000436000	285-43	43	220	1	980
0285000096000	285-9	9	120	12	90	0285000446000	285-44	44	220	1	980
0285000106000	285-10	10	130	12	120	0285000456000	285-45	45	220	1	1000
0285000116000	285-11	11	130	12	120	0285000466000	285-46	46	220	1	1100
0285000126000	285-12	12	130	12	120	0285000476000	285-47	47	230	1	1160
0285000136000	285-13	13	140	6	155	0285000486000	285-48	48	230	1	1180
0285000146000	285-14	14	140	6	155	0285000496000	285-49	49	230	1	1190
0285000156000	285-15	15	140	6	160	0285000506000	285-50	50	230	1	1200
0285000166000	285-16	16	140	6	170	0285000516000	285-51	51	230	1	1200
0285000176000	285-17	17	145	6	205	0285000526000	285-52	52	245	1	1850
0285000186000	285-18	18	145	6	210	0285000536000	285-53	53	245	1	1850
0285000196000	285-19	19	145	6	210	0285000546000	285-54	54	245	1	1850
0285000206000	285-20	20	160	6	290	0285000556000	285-55	55	245	1	1850
0285000216000	285-21	21	160	6	290	0285000566000	285-56	56	260	1	1850
0285000226000	285-22	22	160	6	300	0285000576000	285-57	57	260	1	1850
0285000236000	285-23	23	165	3	325	0285000586000	285-58	58	260	1	1850
0285000246000	285-24	24	165	3	340	0285000596000	285-59	59	260	1	1850
0285000256000	285-25	25	170	3	355	0285000606000	285-60	60	260	1	1850
0285000266000	285-26	26	170	3	360	0285000616000	285-61	61	260	1	1850
0285000276000	285-27	27	175	3	450	0285000626000	285-62	62	260	1	1850
0285000286000	285-28	28	175	3	460	0285000636000	285-63	63	260	1	1850
0285000296000	285-29	29	175	3	460	0285000646000	285-64	64	260	1	1850
0285000306000	285-30	30	190	3	560	0285000656000	285-65	65	260	1	3650
0285000316000	285-31	31	190	3	560	0285000666000	285-66	66	300	1	3650
0285000326000	285-32	32	190	3	560	0285000676000	285-67	67	300	1	3650
0285000336000	285-33	33	195	1	640	0285000686000	285-68	68	300	1	3650
0285000346000	285-34	34	195	1	650	0285000696000	285-69	69	300	1	3650
0285000356000	285-35	35	195	1	660	0285000706000	285-70	70	300	1	3650
0285000366000	285-36	36	195	1	660						

285 S8/285 S10

WAD PUNCH SET

- 8 and 10 pcs.
- in black plastic wallet
- for punching of carton, leather, rubber, sealing material and other soft material
- forged, cutting edge hardened and ground
- shaft red coated
- lightly conical inside for easy removal of the cuttings
- high grade steel
- according to DIN 7200, Form A



Code	Number	Contents	Pieces	Weight/g
0285500806000	285 S8	285- 3, 6, 8, 10, 12, 16, 20, 25 mm	1	1475
0285501006000	285 S10	285- 3, 5, 7, 8, 10, 13, 16, 19, 22, 25 mm	1	1775

286-...

BELT PUNCH

- for punching of carton, leather, rubber, sealing material and other soft material
- forged, cutting edge hardened and ground
- shaft red coated
- high grade steel
- according to DIN 7200, Form B



Code	Number	Ø	l/mm	Pieces	Weight/g	Code	Number	Ø	l/mm	Pieces	Weight/g
0286000016000	286-1	1	105	12	20	0286000146000	286-14	14	135	6	195
0286000026000	286-2	2	105	12	20	0286000156000	286-15	15	135	6	200
0286000036000	286-3	3	105	12	25	0286000166000	286-16	16	140	6	260
0286000046000	286-4	4	110	12	35	0286000176000	286-17	17	140	6	270
0286000056000	286-5	5	115	12	40	0286000186000	286-18	18	150	6	320
0286000066000	286-6	6	115	12	45	0286000196000	286-19	19	150	6	365
0286000076000	286-7	7	120	12	60	0286000206000	286-20	20	155	6	410
0286000086000	286-8	8	120	12	75	0286000216000	286-21	21	155	6	440
0286000096000	286-9	9	125	12	100	0286000226000	286-22	22	155	6	490
0286000106000	286-10	10	125	12	115	0286000236000	286-23	23	155	3	490
0286000116000	286-11	11	125	12	150	0286000246000	286-24	24	160	3	550
0286000126000	286-12	12	130	12	180	0286000256000	286-25	25	160	3	550
0286000136000	286-13	13	130	6	185						

400Z-...

NUMBER PUNCH SET

- 9 pcs.
- for driving numbers by impact into steel
- 9 numbers from 0-9
- in stable plastic box
- completely hardened and tempered
- striking heads inductive tempered
- made of hard and tough steel
- according to DIN 1451



Code	Number	Size of letters mm	Shaft size mm	Pieces	Weight/g
0400000020000	400Z-2	2	6×65	1	165
0400000030000	400Z-3	3	6×65	1	170
0400000040000	400Z-4	4	7×65	1	230
0400000050000	400Z-5	5	8×65	1	295
0400000060000	400Z-6	6	9×70	1	400
0400000070000	400Z-7	7	10×75	1	530
0400000080000	400Z-8	8	11×75	1	635
0400000100000	400Z-10	10	12×80	1	820
0400000120000	400Z-12	12	14×80	1	1110
0400000150000	400Z-15	15	16×90	1	1610
0400000200000	400Z-20	20	18×100	1	2205

400B-...

LETTER PUNCH SET

- 27 pcs.
- for driving letters by impact into steel
- 27 capital letters, from A to Z and "&"
- in stable plastic box
- completely hardened and tempered
- striking heads inductive tempered
- made of hard and tough steel
- according to DIN 1451

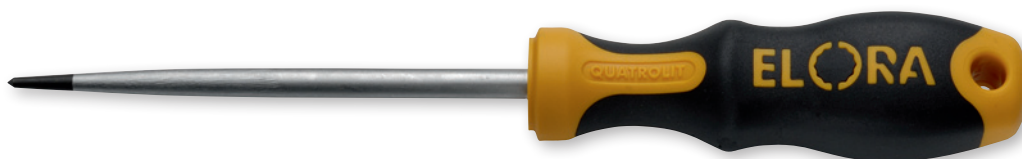


Code	Number	Size of letters mm	Shaft size mm	Pieces	Weight/g
0400010020000	400B-2	2	6x65	1	490
0400010030000	400B-3	3	6x65	1	495
0400010040000	400B-4	4	7x65	1	670
0400010050000	400B-5	5	8x65	1	865
0400010060000	400B-6	6	9x70	1	1180
0400010070000	400B-7	7	10x75	1	1560
0400010080000	400B-8	8	11x75	1	1895
0400010100000	400B-10	10	12x80	1	2440
0400010120000	400B-12	12	14x80	1	4500
0400010150000	400B-15	15	16x90	1	4700
0400010200000	400B-20	20	18x100	1	6590

745

ROUND AWL

- chrome-plated blade
- nonslip QUATROLIT®-2C-handle
- with suspension hole
- special steel

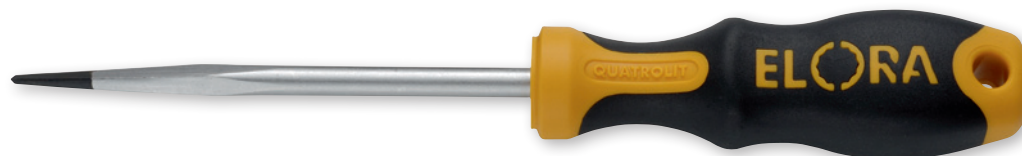


Code	Number	l/mm	Pieces	Weight/g
0745000001000	745	100 x Ø 6	6	75

746

SQUARE AWL

- chrome plated 4 square blade
- nonslip QUATROLIT®-2C-handle
- with suspension hole
- special steel



Code	Number	l/mm	Pieces	Weight/g
0746000001000	746	100 x Ø 6	6	75

You will find revolving punch pliers on page no. 336



259-...

MOUNTING DRIFT PUNCH

- completely hardened and tempered
- striking head inductive tempered
- working edge sharpened and oiled
- shaft black coated
- ELORA-Chrome-Vanadium 59CrV4 / 1.2242

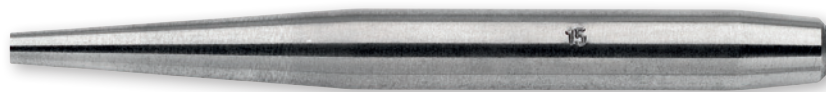


Code	Number	l/mm	l1 mm	d1 Ø mm	d2 Ø mm	Pieces	Weight/g
0259000506000	259-5	180	110	5	12	10	110
0259000606000	259-6	200	120	6	13	10	150
0259000806000	259-8	200	130	8	16	5	220
0259000906000	259-9	200	130	9	20	5	340
0259001006000	259-10	230	140	10	22	5	460
0259001106000	259-11	250	155	11	24	3	620
0259001206000	259-12	280	170	12	27	3	870
0259001406000	259-14	315	190	14	30	3	1260
0259001506000	259-15	340	200	15	32	3	1570
0259001606000	259-16	380	220	16	36	3	2230

231-...

MOUNTING CHECK PLUG

- for positioning of drill bores
- shaft tolerance h9
- ELORA-Chrome-Vanadium 59CrV4 / 1.2242



Code	Number	l/mm	Pieces	Weight/g
0231001306000	231-13	120	5	90
0231001506000	231-15	150	5	165
0231001706000	231-17	170	5	240
0231001906000	231-19	170	5	300
0231002106000	231-21	190	5	410
0231002306000	231-23	190	5	485
0231002506000	231-25	200	5	585
0231002806000	231-28	210	5	805
0231003106000	231-31	230	5	1050

359

MOUNTING PUNCH

- completely hardened and tempered
- striking head inductive tempered
- working edge sharpened and oiled
- shaft black coated
- ELORA-Chrome-Molybdenum-Vanadium 45CrMoV7 / 1.2328



Code	Number	l/mm	Pieces	Weight/g
0359000000000	359	500	3	105

164

PRY BAR

- especially appropriate for difficult to reach areas
- forged pattern
- throughout hardened and tempered to 42–46 HRC
- chrome-plated
- ELORA-Chrome Vanadium 31CrV3 / 1.2208



Code	Number	l/mm	Pieces	Weight/g
0164000000000	164	400	6	475

166

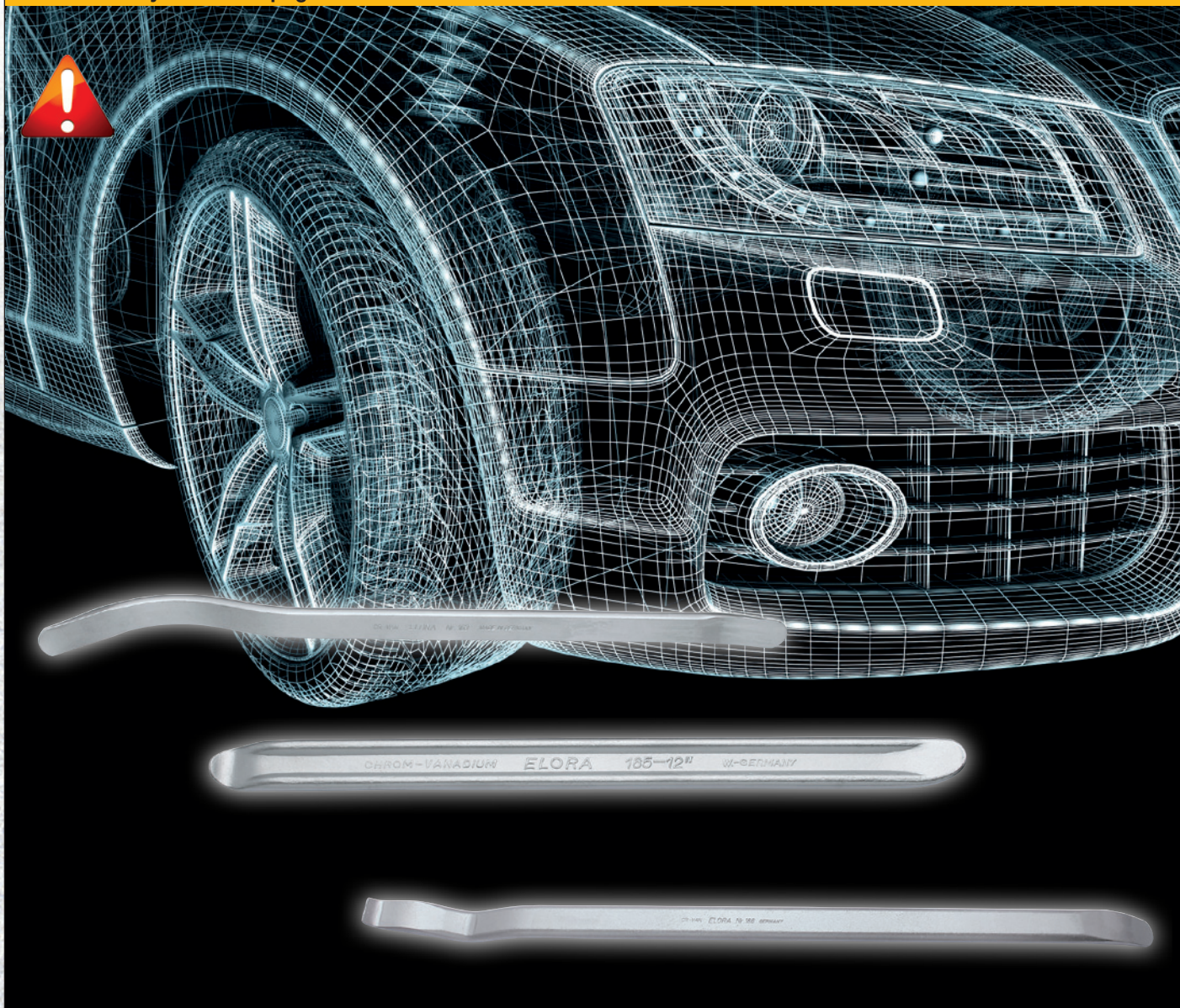
MOUNTING BAR

- for dismantling parts lying on top of each other, for centration of drill bores
- chrome plated 4 square shaft
- ELORA-Chrome-Vanadium 31CrV3 / 1.2208



Code	Number	l/mm	Pieces	Weight/g
0166000000000	166	400	6	500

You will find tyre lever on page no. 440



1675/2-...

NAIL LIFTER, HEXAGONAL

- heavy duty pattern
- hardened and tempered
- high grade tool steel
C45 / 1.0503



Code	Number	l/mm ┌──┐	Pieces ☞	Weight/g ⚖
1675004001002	1675/2-400	400	1	1040
1675005001002	1675/2-500	500	1	1260
1675006001002	1675/2-600	600	1	1480
1675008001002	1675/2-800	800	1	1920
1675010001002	1675/2-1000	1000	1	2350

1676/1-...

WRECKING BAR

- with straight edge and point
- working end hardened
- high grade tool steel
C45 / 1.0503



Code	Number	l/mm ┌──┐	Pieces ☞	Weight/g ⚖
1676010001001	1676/1-1000	1000	1	5000
1676012501001	1676/1-1250	1250	1	6500
1676015001001	1676/1-1500	1500	1	8000
1676017501001	1676/1-1750	1750	1	9500
1676020001001	1676/1-2000	2000	1	10500

1676/2-...

WRECKING BAR

- with angled edge and straight point
- working end hardened
- high grade tool steel
C45 / 1.0503



Code	Number	l/mm ┌──┐	Pieces ☞	Weight/g ⚖
1676010001002	1676/2-1000	1000	1	5000
1676012501002	1676/2-1250	1250	1	6500
1676015001002	1676/2-1500	1500	1	8000
1676017501002	1676/2-1750	1750	1	9500
1676020001002	1676/2-2000	2000	1	10500

1676/3-...

WRECKING BAR

- with point and claw
- working end hardened
- high grade tool steel C45 / 1.0503



Code	Number	l/mm ┌───┐	Pieces ☞	Weight/g ⚖
1676010001003	1676/3-1000	1000	1	5000
1676012501003	1676/3-1250	1250	1	6500
1676015001003	1676/3-1500	1500	1	8000
1676017501003	1676/3-1750	1750	1	9500
1676020001003	1676/3-2000	2000	1	10500

1676/4-...

WRECKING BAR

- heavy duty pattern
- with ball head and edge
- working end hardened
- high grade tool steel C45 / 1.0503



Code	Number	l/mm ┌───┐	Pieces ☞	Weight/g ⚖
1676010001004	1676/4-1000	1000	1	5000
1676012501004	1676/4-1250	1250	1	6500
1676015001004	1676/4-1500	1500	1	8000

1676/6-...

WRECKING BAR

- heavy duty pattern
- with curved edge and straight point
- working end hardened
- high grade tool steel C45 / 1.0503



Code	Number	l/mm ┌───┐	Pieces ☞	Weight/g ⚖
1676015001006	1676/6-1500	1500	1	10000
1676017501006	1676/6-1750	1750	1	12000
1676020001006	1676/6-2000	2000	1	14000

1495-...

PARALLEL BENCH VICE

- to front opening, wide, hardened anvil surface
- extra large spanning depth
- strong spindle with trapezoid thread
- readjustable guide
- milled spanning jaws
- black coated
- drop forged and hardened
- high grade tool steel C45 / 1.0503



Code	Number	Width of jaws mm	Opening mm	Anvil mm	Pieces	Weight/g
1495001154000	1495-115	115	140	45x63	1	7800
1495001354000	1495-135	135	170	57x75	1	14000
1495001504000	1495-150	150	190	65x80	1	18500

1495D-...

SWIVEL BASE FOR BENCH VICE

- for use with ELORA-No. 1495
- stepless rotating area 360°
- black coated



Code	Number	for bench vice ELORA-No.	Bolt Circle mm	Pieces	Weight/g
1495011154000	1495D-115	1495-115	165	1	580
1495011354000	1495D-135	1495-135	195	1	1080
1495011504000	1495D-150	1495-150	225	1	1400

1495L-135

GAS PRESSURE ELEVATOR FOR BENCH VICE

- for use with ELORA-No. 1495-135
- Gas pressure supported height adjustment for comfortable lifting or sinking of bench vice and work piece
- height range up to 240 mm, rotating area 360°
- black coated



Code	Number	Pieces	Weight/g
1495021354000	1495L-135	1	9150

1500-...

PARALLEL BENCH VICE

- big ground anvil
- groove for removal of chips
- readjustable guide
- hardened and ground spanning jaws
- with tube spanning jaws



Code	Number	Width of jaws mm	Opening mm	Anvil mm	Pieces	Weight/g
1500000014000	1500-1	75	45	70x45	1	2700
1500000024000	1500-2	100	53	88x59	1	5400
1500000034000	1500-3	125	72	116x80	1	10500
1500000044000	1500-4	150	90	132x90	1	15000
1500000054000	1500-5	175	90	132x90	1	15500

1500A-... / 1500K-...

JAW CAPS FOR BENCH VICES

- fitting to all ELORA Parallel Bench Vices
- with prism
- magnetic strip for safe hold at the jaw
- ELORA-No. 1500A: aluminium-alloy
- ELORA-No. 1500K: plastic



Code	Number	l/mm	Pieces	Weight/g
1500011004000	1500A-100	100	6	72
1500011254000	1500A-125	125	6	90
1500011504000	1500A-150	150	6	110
1500021004000	1500K-100	100	6	34
1500021254000	1500K-125	125	6	40
1500021504000	1500K-150	150	6	48

